

# SERIE 8 F

---







# FRENCH CHARM

## IN A MOTORHOME

With Series 8F, the art of living has never been so alluring. In this series, you can enjoy one of our RAPIDO A-Class models.

Get ready to be charmed by a motorhome where the chic interior joins the stylish look enhanced by the curvy front.

854F



2+2*	7	2+2 2+2+2**

20  
22

NEW



6,70 m x 2,35 m

855F



2+2*	5	2+2 2***

20  
22

NEW



6,79 m x 2,35 m

866F



2+2*	5	2+2 2+1***	High beds



7,49 m x 2,35 m

\* Seats with seat belts: for registered (driving) seats, please refer to the technical manual available on our website.  
\*\* With drop-down bed option.  
\*\*\* With option of no cab bed.



## 886F



2+2\*



4



2+2  
2+1\*\*\*



XL



7,20 m x 2,35 m

## 896F



2+2\*



5



2+2  
2+1\*\*\*



XXL



7,49 m x 2,35 m

SERIE 8F

### EXTERNAL SLIDING STORAGE DRAWER



With key lock. Exclusive option for Series 8F.

# STANDARD FITTINGS

## CONSTRUCTION

- 100% shock absorption polyester: roof, side walls and underfloor protection
- Floor bodywork in polyurethane
- Styrofoam® insulation

## BODYWORK AND OPENINGS

- Streamlined front with LED day running lights
- Panoramic wide-angle windscreen
- Large longitudinal living room skylight
- Designer rear pillars with inbuilt tail light unit
- Rear bumper with LED lights
- Inbuilt wiring/space for reversing camera
- Double glazed living area windows with polyurethane frame, and cassette blinds and flyscreen
- Electric living area entry step
- Large living area door: 540 mm (models ≥ 7.49 m)

## HEATING

- TRUMA Combi 6 heating with CP PLUS control panel
- Anti-crash system so you can drive with the gas heating on
- Heated waste water tank

## STORAGE

- Internal underfloor storage compartments (except 854F)
- Heated garage/storage area
- Storage area LED ceiling light rail

## STYLE

- BELLAGIO furniture:
  - Matte overhead cupboard doors (option of glossy)
  - Dark laminate surface on kitchen worktop and living room table
- NACARAT furniture:
  - Glossy white overhead cupboard doors
  - Light mineral laminate surface on kitchen worktop and living room table
- Horizontal wood grain
- Push lock on overhead cupboard doors
- LED backlit racks in living room
- Cab bed bottom with stitched TEP\* design and LED lights
- 100% LED ambient lighting in living room, kitchen and bedroom

## INTERNAL STORAGE COMPARTMENT

Living room hatch for accessing the storage space from the interior (except 854F).



## LIVING ROOM

- Forward-facing conversion of face-to-face living room bench seats
- Living room bench seat armrests
- Easy movement around the living room (no raised floor)
- Open unit to fit 22" flat screen TV
- Laminated table with solid wood moulding (NACARAT) or 3D DUO veneer edges (BELLAGIO)
- Spotlight base under overhead cupboards with inbuilt USB port and dimmer
- Magnetic bench seat backs for a faster forward-facing conversion

## KITCHEN

- Glossy white drawer fronts with inbuilt matte black handles
- Electric central locking drawers
- Lighting under the worktop
- Glossy white Plexiglas finish on kitchen window with inbuilt spice rack and 230 V and 12 V power outlet compartment
- Worktop extension on kitchen unit side
- Large AES refrigerator
- Refrigerator with flat double hinge door (left or right opening) (855F)
- Embossed stainless steel stove top with 2 hobs, independent black covers and piezo ignition (option 3 hobs)
- Inbuilt cooker hood with LED lighting
- Chromed brass kitchen tap with ceramic cartridge

## WASHROOM

- New shower laminate pattern
- DUO'SPACE: washroom with swivelling partition to optimise space (854F and 855F)
- Thermoformed rectangular basin with brass mixer tap and ceramic cartridge (866F, 886F and 896F)
- Shower column with slate grey Plexiglas finish
- Skylight with blackout blind and flyscreen, and clothes drying rack
- Chrome finish bathroom accessories
- Quick-clean thermoformed cassette toilet compartment

## BEDROOM

- Wall-mounted wardrobes with curved door and push lock system (886F and 896F)
- Stylish bedside tables with open alcoves, USB ports and 12 V plugs (886F and 896F)
- Backlit overhead cupboards (886F and 896F)
- Fabric-covered backlit headboard
- Permanent bed with aluminium base frame and active multilayer slats, with highly durable BULTEX® foam mattress
- Retractable central bed base (886F and 896F)
- Second TV space in bedroom with 12V/coaxial/HDMI pre-wiring

For the complete list of equipment, please refer to the technical manual available on our website.

\* TEP: Polyamide-coated fabric.

\*\* Embossing on leather upholstery.

**BASE VEHICLE FITTINGS**

- Electric power steering
- Coach-style wing mirrors in white
- Central locking on driver's and living area doors
- "Coming-home" mode with automatic awning light and electric entry step

**CAB FITTINGS**

- Assisted foldaway cab bed with slat base and BULTEX® foam mattress
- Central locking on cab bed
- Cup holders
- Driver's door with electric window
- Embroidered\*\* cab headrest covers

**DUAL-PLEAT THERMAL SLIDING WINDSCREEN BLIND**

SELECT PACK



Up/down (sunshade)



Down/up (privacy screen)

**SELECT  
PACK**

(OPTIONAL EXTRA)

**FOR EVEN MORE  
FITTINGS**

- Reversing camera with night vision
- DAB ALPINE® multimedia system with 6.9" screen and APPLE CAR PLAY/ANDROID AUTO functions
- ESC with Anti Slip Regulation (ASR), Roll Over Mitigation (ROM), Hill Holder, cross wind assist, towing stability control and automatic post-collision braking
- Electric de-frosting wing mirrors
- Height-adjustable cab seats
- Dual-pleat thermal sliding windscreen blind: up/down (sunshade) and down/up (privacy screen)
- Driver's door with 2-point locking
- Living area door with 2-point locking, fixed window and inbuilt bin
- Living area door flyscreen
- Automatic gas inverter
- 2nd remote keyless entry control (RKE)

SERIE 8F

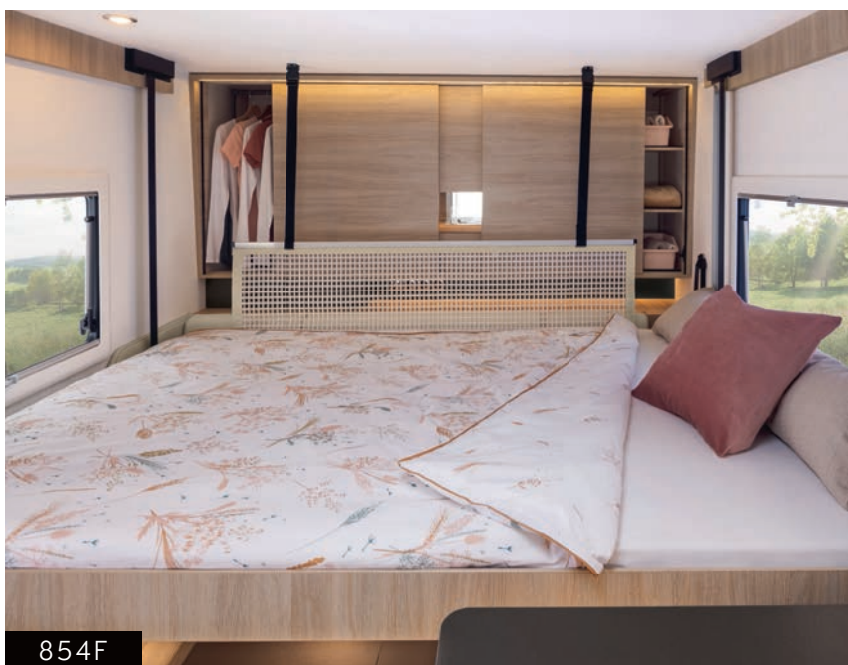




854F



854F



854F



## NEW 854F

One exciting new product in the 2022 RAPIDO catalogue is the 854F.

What does it offer? A large rear living room for up to 7 people, a redesigned kitchen and a DUO'SPACE bathroom for optimised space!

SERIE 8F

## NEW 855F

The 855F reinvents the traditional twin bed layout in an under-7 metre model.

Its compact nature does not impinge on the living spaces and even boasts twin beds up to 204 cm long.

The DUO'SPACE bathroom, cleverly tucked away behind the living room, is a smart solution for dividing the spaces.







855F







SERIE 8 F

855F



855F









896F

SERIE 8 F



866F