

# 2024 COLLECTION ENGLISH

YOUR TRAVEL PARTNER

~  
**TRAVEL  
DREAMS**  
~

SINCE 1961



**RAPIDO** 





## Dear motor home enthusiasts,

Since designing the very first RAPIDO motorhome, the Randonneur 410, we have continued to perfect our models by paying close attention to our customers' feedback and needs.

We are proud to present our 2024 Collection packed with new features. Flick through the pages of our catalogue to discover new models and the improvements we continue to make to our vehicles.

However, the numerous improvements remain in line with our DNA: creating an unmatched warm atmosphere that has naturally been handed down to us through Constant Rousseau's expertise as a craftsman, a cabinetmaker and the company's founder in 1961, and guided by the unconditional love of a job well-done.

**Nicolas Rousseau**  
Managing Director



Discover RAPIDO's expertise



## New 2024

04

NEW SERIES 6F  
ULTIMATE LINE  
NEW STYLE

08

## 2024 range

## Campervans

10

VANS SERIES



18

## Compact

C SERIES



## Spacious

34

SERIES 6F  
SERIES 8F  
SERIES 80dF  
DISTINCTION SERIES  
M SERIES



80

## Furniture & upholstery

## Packs & options

82



NEW FOR 2024

NEW SERIES

6F

## A new identity

The winds of change are blowing through RAPIDO's Series 6F low-profile models. At first glance, you'll love their new low-profile hood which gives them a distinctive style.



666F





666F

## Brand new exterior

The SKYVIEW panoramic roof provides a sporty look as well as unrivalled natural light inside. It is fitted with a handy electric defroster for unmatched comfort. And its new rear panel with designer pillars is sure to attract admiring looks on the road.

## Elegant interior

Inside, you can enjoy unequalled style by selecting between our LUCEO and NACARAT styles as well as our standard feature PALMA and NOUMEA\* upholstery.



666F



Discover Series 6F

*\*The upholstery is determined by the furniture style selected: NOUMEA with LUCEO and PALMA with NACARAT.*



NEW FOR 2024

# ULTIMATE LINE

## SPECIAL EDITION SERIES

**Make the most of your adventure**

**+** 8066dF | 8096dF | i66 | i96

The four RAPIDO 2024 Collection A-class models all feature the ULTIMATE LINE finish. You are sure to find the right model for you. Regardless of which model you decide on, when you choose an ULTIMATE LINE model you get a unique motorhome.



8096dF

## EXCLUSIVE FITTINGS

ULTIMATE LINE models boast enhanced quality in terms of their fittings, giving you a brand new look in addition to the increased onboard comfort:

- Exclusive exterior décor
- 16" alloy rims
- TRUMA Combi 6 EH (gas and electricity) heating with CP PLUS control panel (except i66)
- Heating distributed via the living room table leg
- Heated waste water tank
- Inbuilt vacuum cleaner
- PALMA or NOUMEA TEP\* embroidered upholstery
- ULTIMATE LINE living room cushions
- ULTIMATE LINE embroidery on cab seat headrests
- Living room and bedroom indirect lighting dimmer
- ULTIMATE LINE embroidery on living area doormat
- Magnetic shower door latches with matte black edge
- Shower column with backlit finish and aluminium-style finish
- Black shower duckboard
- Washroom with boat deck-type wall covering

\*TEP: Polyamide-coated fabric.



NEW FOR 2024

# NEW STYLE: LUCERO\*



## A modern look

With its light wood tones, LUCERO is a decidedly modern style. Its horizontal wood grain gives it a contemporary look and creates an enjoyable atmosphere.



## Attention to detail

To create a refined yet welcoming style, we have chosen new terracotta net curtains for the front and matching two-fabric cushions. All of these materials have been meticulously selected by our team of designers so you can enjoy a style with uncompromising quality.

## Contrasting interplays

Our RAPIDO teams have designed a characterful style so you can enjoy charismatic journeys. LUCERO's light wood colour is enhanced by bright white accents combined with a new textured slate grey finish in the kitchen. And the overhead cupboard doors are elegantly highlighted with a matte black trim.

\* Available for VANS, C, 6F, 8F and 80dF.

The LUCERO style varies between ranges. For more details, please refer to the relevant model page.



# WHEN CHOOSING YOUR RAPIDO, FIRST SELECT YOUR LAYOUT

## CAMPERVANS



### SERIE VANS

CAMPERVANS  
WITH PEUGEOT CHASSIS

## COMPACT



### SERIE C

COMPACT LOW-PROFILE MODELS  
WITH SPECIAL PEUGEOT CHASSIS



COMPACT A-CLASS MODELS  
WITH SPECIAL FIAT CHASSIS

## SPACIOUS



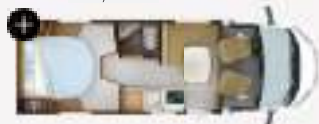
### SERIE 6F\*

LOW-PROFILE MODELS  
WITH SPECIAL PEUGEOT CHASSIS  
& EXTRA-WIDE REAR TRACK



## ELECTRIC HEIGHT-ADJUSTABLE CENTRAL BED WITH LARGE STORAGE AREA/GARAGE

**C50** 6,59 m



**686F** 7,20 m



**C86** 6,99 m



**C86i** 6,99 m



**696F** 7,49 m



## TWIN BEDS

**V68** 6,36 m



**C55** 6,72 m



**C55i** 6,72 m



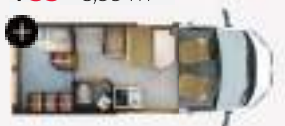
**666F** 7,49 m



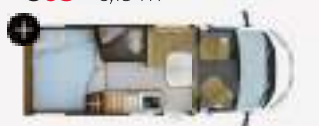
ALDE AS OPTION

## TRANSVERSE BED/CAB MAIN DROP-DOWN BED/ ELECTRIC MAIN DROP-DOWN BED

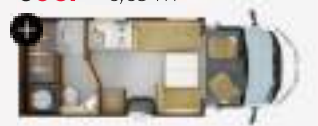
**V55** 5,99 m



**C03** 6,19 m



**606F** 6,69 m



**V65XL** 6,36 m







### SERIE 8F

A-CLASS MODELS  
WITH FIAT CHASSIS  
& EXTRA-WIDE REAR TRACK



### SERIE 80dF

A-CLASS MODELS  
WITH FIAT AL-KO CHASSIS,  
EXTRA-WIDE REAR TRACK  
AND STORAGE DOUBLE FLOOR



### SERIE DISTINCTION

A-CLASS MODELS  
WITH FIAT AL-KO CHASSIS,  
EXTRA-WIDE REAR TRACK  
AND STORAGE DOUBLE FLOOR



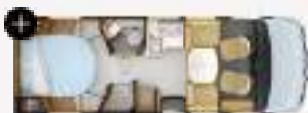
### SERIE M

A-CLASS MODELS  
WITH MERCEDES AL-KO CHASSIS,  
EXTRA-WIDE REAR TRACK  
AND STORAGE DOUBLE FLOOR

**886F** 7,20 m



**8086dF** 7,20 m



**i96** 7,54 m



**M96** 7,54 m



**896F** 7,49 m



**8096dF** 7,49 m



ULTIMATE  
*line*



ALDE AS OPTION

ULTIMATE  
*line*



ALDE AS OPTION

ULTIMATE  
*line*



ALDE AS OPTION

**866F** 7,49 m



**8066dF** 7,49 m



ULTIMATE  
*line*



ALDE AS OPTION

**i66** 7,54 m



ULTIMATE  
*line*



ALDE AS STANDARD

**M66** 7,54 m



ULTIMATE  
*line*



ALDE AS STANDARD

**854F** 6,99 m



# SERIE VANS

## Welcome home

Your freedom is more precious than ever before, so let our campervan range bring your travel dreams to life. Choose from our three layouts to travel with 2-4 people.







PEUGEOT chassis campervans



## V55

5,99 m x 2,05 m



NEW

20  
24

## V65XL

6,36 m x 2,05 m



## V68

6,36 m x 2,05 m



## RAPIDO VANS PACK

(OPTIONAL EXTRA)

For even more fittings



- ESC with Anti Slip Regulation (ASR), Roll Over Mitigation (ROM) and Hill Holder
- Height-adjustable Comfort cab seats with swivel base and 2 armrests
- Front bumper painted in bodywork colour
- Automatic gas inverter
- DAB PIONEER® multimedia system with 6.8" screen and APPLE CAR PLAY/ ANDROID AUTO
- Reversing camera with control screen built into the dashboard
- 2nd remote keyless entry control (RKE)
- Side door with flyscreen

\* Seats with seat belts: for registered (driving) seats, please refer to the technical manual available on our website.



## Construction

- XHP Xtrem Hybrid Protect insulation = polyurethane and polyether compound with aluminium beams
- Floor with 25 mm Styrofoam insulation and polyester underfloor
- Moulded internal bodywork walls
- Monobloc honeycomb ceiling
- Watertight floor seal protecting the side door area
- Storage area:
  - Reinforced panels with TITAN finish
  - Sliding curtain on storage area compartment for permanent access
  - Detachable storage shelves
  - Reinforced storage area floor covering
  - Stowage bars

## Bodywork and openings

- Model name in black lettering (chrome on Lanzarote colour)
- Cab recess for extra space
- Midway stop on sliding side door
- Transparent skylights with blind and flyscreen (70 x 50 cm model, located up front)
- Side and rear windows with double glazing, polyurethane frame and cassette flyscreen and blinds
- Full thermal covering and handle on the side door
- Protective side door gutter with LED lighting
- Polyester hood with black branding (chrome on Lanzarote colour) (V65XL)

## Heating

- TRUMA Combi 4 heating with CP PLUS control panel

## Style

- LUCEO furniture:
  - Black trim on overhead cupboard doors
  - Push lock on overhead cupboard doors
  - New textured grey slate surface on back of dinette and side of kitchen unit
  - Non-woven flooring
  - Light mineral laminate surface on kitchen worktop and living room table with black veneer edging strip
- NACARAT furniture:
  - Glossy white overhead cupboard doors
  - Light mineral laminate surface on kitchen worktop and living room table with wood-colour veneer edging strip
- Horizontal wood grain
- Automatic indoor/outdoor LED lighting with « Coming Home/ Leaving Home » mode

## Living room

- Living room window finish with backlit Plexiglass (LUCEO: charcoal grey; NACARAT: glossy white)
- Living room bench seat:
  - Ultra-comfortable upholstery shape
  - Depth-adjustable seat
  - Height-adjustable headrests
  - Wooden edging strip
  - Side backlighting
  - Storage under dinette seat bench
- Table with extension
- Spotlight under overhead cupboards with inbuilt USB port (LUCEO: matte black; NACARAT: chrome)
- TV wiring and mount

## Kitchen

- White drawer fronts with inbuilt matte black handles
- Refrigerator with freezer
- Extra spice rack on kitchen side (LUCEO: charcoal grey; NACARAT: glossy white)
- Kitchen unit:
  - Backlit along the bottom
  - Generous smooth stainless steel sink with glossy black glass cover
  - Chromed brass kitchen tap with ceramic cartridge
  - 2-hob overhanging screen-printed tempered glass stove top with dual-function cover: splashback and worktop extension
  - Worktop extension
  - Inbuilt rubbish bin
  - Wire basket for bottles (V68 and V65XL)
  - Storage alcove
- Drawer storage with cutlery/pot spaces and central locking

## Washroom

- DUO'SPACE: washroom with swivelling partition to optimise space (V68)
- MODUL'SPACE®: with curved shower tray for greater ease (V55 and V65XL)
- White basin (V55 and V65XL: rectangular; V68: round)
- High storage unit with mirror doors (V55)
- Storage alcoves
- Laminate basin countertop
- Shower column with Plexiglass finish and shower head (V68)
- Towel rail
- Cup holder and cup
- LED lighting
- Camping toilet with removable tank
- Teak-style shower duckboard (V68)
- Laminate surface on shower walls

## Bedroom

- Permanent bed with aluminium base frame and active multilayer slats, with highly durable BULTEX® foam mattress
- High quality stretch fabric on permanent bed mattress
- Bedroom speaker
- Rear lintel storage

## Base vehicle fittings

- 2.2-litre 140 hp BlueHDi PEUGEOT BOXER\* base vehicle
- 4 registered (driving) seats
- ABS braking
- Traction+ with Hill Descent Control (helps control speed downhill)
- Driver and passenger airbags
- Electric de-frosting wing mirrors
- Central locking on cab and side doors with remote control
- Spare tyre
- Reinforced rear axle suspension (V68 and V65XL)
- Cruise control with speed limiter
- Stop & Start

## Cab fittings

- Cab blinds (windscreen and side windows)
- Electric front windows
- Independent car radio operation
- Carpeted floor in cab
- TOUCH reading spotlight in cab
- Leather steering wheel and gear knob
- Embroidered cab headrest covers

## Living area fittings

- Digital control panel
- Anti-crash system, allows you to drive with the gas heating on
- Solar panel and reversing camera wiring
- Two 92 Ah AGM leisure batteries (with coupler, separator and booster)
- 3-point retractable safety belt(s) in living area
- USB plugs in living room/bedroom
- External shower with hot and cold water
- Living room speaker for greater sound quality when driving and parked

*\*VANS Series models are also available with the optional FIAT DUCATO chassis. Contact your local dealer to find out more.*



For the complete equipment list, please refer to the technical manual available on our website or scan this QR code.

## V55: 100% innovation

The V55 is a unique model in the campervan world. It boasts all the comforts of home thanks to its large swivelling MODUL'SPACE® wardrobe, which is a RAPIDO patented innovation. This large wardrobe is retractable and frees up the shower space by sitting above the bed. At night, it moves back into the shower space to free up the sleeping area.







V55

## V65XL: jack-assisted drop-down bed for 4 beds in the blink of an eye!

The V65XL features a jack-assisted drop-down bed under its 2.88-metre high ceiling. When night falls, this double bed can be set up in an instant so you can travel as a group of four in complete comfort. Thanks to its large washroom and patented MODUL'SPACE® system, you can enjoy privacy while travelling with family and friends.

## V68: generous interior space

The V68's onboard space is optimised thanks to its DUO'SPACE washroom. The cleverly-designed DUO'SPACE washroom features a partition that swivels to create a toilet fully separated from the shower area or a shower with all the comfort and space you could need for your feet and shoulders.



V55



V65XL



V65XL



V65XL





V68



V68



V68



SERIE

C

## Enter another dimension

Travel takes on a whole new dimension with C Series.

Featuring compact exterior dimensions, the six C Series models take you on new adventures.

Select your layout from our compact A-class and low-profile models. These manoeuvrable, agile models get you closer to your destination.







**C..** Compact low-profile models with special PEUGEOT chassis

**C..i** Compact A-class models with special FIAT chassis



NEW

20  
24

## C03

6,19 m x 2,17 m



2+2\*



5



2+1



DUO'SPACE



## C50

6,59 m x 2,17 m



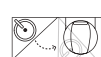
2+2\*



5



2+1



DUO'SPACE



## C55

6,72 m x 2,17 m



2+2\*



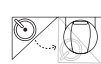
5



2+1



120 cm  
High  
beds



DUO'SPACE



\* Seats with seat belts: for registered (driving) seats, please refer to the technical manual available on our website.



## C86

6,99 m x 2,17 m



2+2\*



4



2+1



NEW

20  
24

## C55i

6,72 m x 2,17 m



2+2\*



5



2+2



120 cm  
High beds



DUO'SPACE



NEW

20  
24

## C86i

6,99 m x 2,17 m



2+2\*



4



2+2



## Construction

- 100% shock absorption polyester: roof, side walls and underfloor protection
- Floor bodywork in polyurethane
- Styrofoam® insulation

## Bodywork and openings

- Model name and RAPIDO brand in black lettering
- SKYVIEW panoramic roof (except C55i and C86i):
  - Stylish, modern look
  - Laminated glass with UV coating and inbuilt blackout blind
  - Cab with wraparound windscreen
  - SKYVIEW heating duct
- Cab bed skylight (C55i and C86i)
- Large longitudinal living room skylight with wooden trim
- Designer rear pillars with inbuilt tail light unit
- Rear bumper with LED lights
- Inbuilt wiring/space for reversing camera
- Aluminium side skirt line
- Exclusive exterior décor
- Double glazed living area windows with polyurethane frame, and cassette blinds and flyscreen
- Electric entry step

## Heating

- Combi DIESEL heating with CP PLUS control panel

## Storage

- Heated garage/storage area
- Access to storage area/garage from left and right side
- Storage area LED ceiling light rail

## Style

- LUCEO furniture:
  - Wood-colour overhead cupboard doors with black trim
  - New textured grey slate surface on back of dinette (except C86 and C86i) and side of kitchen unit
  - Non-woven flooring
- NACARAT furniture:
  - Glossy white overhead cupboard doors
- Horizontal wood grain
- Light mineral laminate surface on kitchen worktop and living room table
- Push lock on overhead cupboard doors
- 100% LED ambient lighting in living room, kitchen and bedroom

## Living room

- Height-adjustable headrests (C55 and C55i)
- Living room bench seat armrest (C86 and C86i)
- Open unit to fit 22" flat screen TV (C86, C86i)
- Laminated table with solid wood moulding (NACARAT) or veneer edges (LUCEO)
- Spotlight under overhead cupboards with inbuilt USB port (LUCEO: matte black; NACARAT: chrome)
- Magnetic bench seat backs for a faster forward-facing conversion (C03, C50, C86 and C86i)
- Living room converts to single occasional berth (C03, C50, C55 and C86)

## Kitchen

- Self-closing drawers with electric central locking
- Lighting under the worktop
- Backlit kitchen window cladding with inbuilt spice rack
- Worktop extension
- Compressor refrigerator
- 2-hob overhanging screen-printed glass camping stove top with glass cover
- Built-in cooker hood with LED lighting
- Chromed brass kitchen tap with ceramic cartridge

## Washroom

- DUO'SPACE: washroom with swivelling partition to optimise space (C03, C50, C55 and C55i)
- Washroom storage unit with two mirror doors and frosted RAPIDO logo (C86 and C86i)
- Teak-style shower duckboard (except C86 and C86i)
- Thermoformed rectangular basin with swivel brass mixer tap and ceramic cartridge (C86 and C86i)
- Shower column with slate grey Plexiglas finish
- Skylight with blackout blind and flyscreen, and clothes drying rack
- Chrome finish washroom accessories
- Quick-clean thermoformed camping toilet compartment

## Bedroom

- Wall-mounted wardrobes with push lock system (C50, C86 and C86i)
- Stylish bedside tables with open alcoves and 12 V plug (C50, C86 and C86i)
- Spotlight under overhead cupboard with USB port
- Fabric-covered backlit headboard
- Permanent bed with aluminium base frame and active multilayer slats, with highly durable BULTEX® foam mattress
- Adjustable footboard for easier storage access
- Retractable central bed base (C50, C86 and C86i)
- Second TV space in bedroom with 12V/coaxial/HDMI wiring

## Base vehicle fittings

- 2.2-litre 140 hp BlueHDi PEUGEOT BOXER\* base vehicle (C03, C50, C55 and C86)
- 2.2-litre 140 hp FIAT DUCATO base vehicle (C55i and C86i)
- Central locking on cab and living area doors
- «Coming Home» mode with automatic awning light and electric entry step
- Stop & Start

## Cab fittings

- Cup holders
- Cab doors with electric windows (C03, C50, C55 and C86)
- Driver's door with electric window (C55i and C86i)
- TOUCH reading spotlight in cab (except C55i and C86i)
- Jack-assisted foldaway cab bed with slat base and BULTEX® foam mattress (C55i and C86i)
- Easy-clean flooring for cab/living area connection
- Embroidered\* cab headrest covers

*\* C Series low-profile models are also available with the optional FIAT DUCATO chassis. Contact your local dealer to find out more.*



For the complete equipment list, please refer to the technical manual available on our website or scan this QR code.

*\* Embossing on leather upholstery.*





### Bed conversion

Quickly convert your living room into an extra single bed so three people can sleep in your vehicle.



### An extra seat

Guests visiting?  
Pull out the foldaway seat to increase the number of places at your table to five (C55; fixed seat on C50).

## SELECT PACK



(OPTIONAL EXTRA)

**For even more fittings**

- Reversing camera with control screen built into the dashboard
- DAB PIONEER® multimedia system with 6.8" screen and APPLE CAR PLAY/ANDROID AUTO
- ESC with Anti Slip Regulation (ASR), Roll Over Mitigation (ROM) and Hill Holder (except C55i and C86i)
- ESC with Anti Slip Regulation (ASR), Roll Over Mitigation (ROM), Hill Holder, cross wind assist, towing stability control and automatic post-collision braking (C55i and C86i)
- Electric de-frosting wing mirrors
- Height-adjustable swivel cab seats with 2 adjustable armrests
- Dual-pleat thermal windscreen and cab window roller blinds (except C55i and C86i)
- Thermal sliding, dual-pleat windscreen blind: up/down (sunshade) (C55i and C86i)
- Living area door with 2-point locking and fixed window
- Living area door flyscreen
- 2nd remote keyless entry control (RKE)
- Second leisure battery AGM



## Enjoy freedom anywhere, anytime

The compact C Series opens up even more travel opportunities. Enjoy the freedom that C Series gives you to explore new horizons.

And it comes packed with standard fittings so you can travel with complete freedom.







C03

## Add another dimension to your travels

Whether you choose a low-profile or an A-class, you are sure to find a C Series model to suit your needs with our wide range of layouts, styles and looks.

## Comprehensive range

### New compact A-class

The new C Series A-class compact models have a completely new, attractive front end. Inspired by luxury cars, these models will make you stand out on the road with their sharp lines.

### New low-profile C03

Rounding out the range is the new compact low-profile C03 which features a transverse bed over a storage area and permanent steps for easy bed access, all within a length of under 6.20 metres.



Watch a video of this model



C03







C55



C55



C55



C86





CB6



CB6



C55i



C55i





C55i



C55i



C86i





C86i



C86i



SERIE

6F



**Well-being  
starts here**

Series 6F embodies RAPIDO's know-how and love of beautiful finishes - down to the smallest detail.

This series is generously equipped with standard fittings and it features redesigned light-filled living spaces.

Prepare to be amazed by its new exterior design and even more modern lines.







Low-profile models with special PEUGEOT chassis & extra-wide rear track



NEW

20  
24

## 606F

6,69 m x 2,35 m



2+2\*



6



2+2



NEW

20  
24

## 666F

7,49 m x 2,35 m



2+2\*



5



2+1  
2+2\*\*



120 cm  
High beds



ALDE  
as option



NEW

20  
24

## 686F

7,20 m x 2,35 m



2+2\*



4



2+1  
2+2\*\*



\* Seats with seat belts: for registered (driving) seats, please refer to the technical manual available on our website.

\*\* With drop-down bed option.



NEW

20  
24

696F

7,49 m x 2,35 m



2+2\*



5



2+1  
2+2\*\*



## ELECTRIC DROP-DOWN BED

AVAILABLE AS AN OPTION ON ALL MODELS\*

- Finish under drop-down bed with direct and indirect lighting
- Incorporated with the living area style
- Privacy curtain
- Storage net (except 606F)
- Slat base and BULTEX® foam mattress
- Height under drop-down bed: 1.93 m (1.95 m for 606F)
- 65 cm to 85 cm clearance between the top of the mattress and the ceiling (606F: up to 130 cm clearance)

\*Standard feature for 606F.



## Construction

- 100% shock absorption polyester: roof, side walls and underfloor protection
- Floor bodywork in polyurethane
- Styrofoam® insulation

## Bodywork and openings

- New low-profile hood
- New SKYVIEW panoramic roof with electric defroster\*
- New rear panel with designer pillars and rear spoiler
- New rear lights design
- New side skirt line
- Pass-through storage area
- Model name and RAPIDO brand in black lettering
- Large longitudinal living room skylight with wooden trim
- Inbuilt wiring/space for reversing camera
- Double glazed living area windows with polyurethane frame, and cassette blinds and flyscreen
- Large living area door: 540 mm (models: 7.49 m)

## Heating

- ALDE Arctic Comfort Plus heating (option in 666F)
- TRUMA Combi 4 heating with CP PLUS control panel
- Anti-crash system so you can drive with the gas heating on

## Storage

- Heated garage/storage area
- Storage area LED ceiling light rail

## Style

- LUCEO furniture:
  - Wood-colour overhead cupboard doors with black trim
  - New textured grey slate surface on side of kitchen unit
  - Non-woven flooring
- NACARAT furniture:
  - Glossy white overhead cupboard doors
- Horizontal wood grain
- Push lock on overhead cupboard doors
- LED backlit racks in living room
- Light mineral laminate surface on kitchen worktop and living room table
- TEP™ cab edging strip with RAPIDO embroidery and double stitching
- 100% LED ambient lighting in living room, kitchen and bedroom
- New TEP™ upholstery as standard with quilted pattern and decorative piping (PALMA with NACARAT and NOUMEA with LUCEO)

## Living room

- Forward-facing conversion of face-to-face living room bench seats
- Living room bench seat armrest
- Easy movement around the living room (no raised floor)
- Overhead cupboards in the living room with extra-wide door (except with drop-down bed option)
- Open unit to fit 22" flat screen TV
- Laminated table with solid wood moulding (NACARAT) or matte black veneer edges (LUCEO)
- Spotlight under overhead cupboards with inbuilt USB port (LUCEO: matte black; NACARAT: chrome)
- Magnetic bench seat backs for a faster forward-facing conversion

## Kitchen

- New straight designer kitchen (606F)
- White drawer fronts with inbuilt matte black handles (LUCEO: matte white; NACARAT: glossy white)
- Soft-closing drawers with electric central locking
- Lighting under the worktop
- Plexiglas finish on kitchen window with inbuilt spice rack and 230 V and 12 V power outlet compartment (LUCEO: glossy black; NACARAT: glossy white)
- Extra spice rack on kitchen side (LUCEO: glossy black; NACARAT: glossy white)
- Worktop extension on kitchen unit side
- Large 156-litre AES fridge (686F: 135-litre)
- Embossed stainless steel stove top with 2 hobs, independent black covers and piezo ignition (option 3 hobs, except 606F)
- Inbuilt cooker hood with LED lighting
- Chromed brass kitchen tap with ceramic cartridge

## Washroom

- Washroom storage unit with two mirror doors and frosted RAPIDO logo (except 606F)
- High storage unit with mirror (606F)
- Large full-width rear washroom with XXL rear storage (606F)
- Matte white washroom unit door with push-lock system
- Laminate basin countertop with aluminium-style finish
- Thermoformed rectangular basin with swivel brass mixer tap and ceramic cartridge
- Shower column with slate grey Plexiglas finish
- Skylight with blackout blind and flyscreen, and clothes drying rack
- Chrome finish washroom accessories
- Quick-clean thermoformed camping toilet compartment

## Bedroom (except 606F)

- Wall-mounted wardrobes with curved door and push lock system (686F and 696F)
- Stylish bedside tables with open alcoves and 12 V plug (686F and 696F)
- Spotlight under overhead cupboard with USB port
- Backlit overhead cupboards (686F and 696F)
- Fabric-covered backlit headboard
- Permanent bed with aluminium base frame and active multilayer slats, with highly durable BULTEX® foam mattress
- Retractable central bed base (686F and 696F)
- Storage drawer at the foot of central bed (686F and 696F)
- Second TV space in bedroom with 12V/coaxial/HDMI wiring

## Base vehicle fittings

- 2.2-litre 140 hp BlueHdI PEUGEOT BOXER\* base vehicle
- Central locking on cab and living area doors
- «Coming Home» mode with automatic awning light
- Stop & Start

## Cab fittings

- Cup holders
- Cab doors with electric windows
- TOUCH reading spotlight in cab
- Easy-clean flooring for cab/living area connection
- Embroidered\*\*\* cab headrest covers

\*Series 6F models are also available with the optional FIAT DUCATO chassis.  
Contact your local dealer to find out more.



For the complete equipment list, please refer to the technical manual available on our website or scan this QR code.

\* SKYVIEW defroster/demister combined with wing mirror demisters. Engine must be running and the heating and ventilation set to maximum.

\*\* TEP: Polyamide-coated fabric.

\*\*\* Embossing on leather upholstery.





### Forward-facing conversion

Simple and easy to do, this conversion requires no additional items. Enjoy the bonus of additional storage space in the living room bench seats.

SERIE 6F

## SELECT PACK



(OPTIONAL EXTRA)

**For even more fittings**

- Reversing camera with control screen built into the dashboard
- DAB PIONEER® multimedia system with 6.8" screen and APPLE CAR PLAY/ANDROID AUTO
- ESC with Anti Slip Regulation (ASR), Roll Over Mitigation (ROM) and Hill Holder
- Electric de-frosting wing mirrors
- Height-adjustable swivel cab seats with 2 adjustable armrests
- Dual-pleat thermal windscreen and cab window roller blinds
- Living area door with 2-point locking, fixed window and inbuilt bin
- Living area door flyscreen
- Automatic gas inverter
- 2nd remote keyless entry control (RKE)



## New 606F

Enjoy living spaces in the new 606F. With its 6.69-metre length, the 606F offers you a large living room, a great kitchen that has been completely redesigned with clean lines, and a spacious full-width rear washroom with XXL wardrobe. This is all possible thanks to the main electric drop-down bed, which hides away during the day and comes out at night to offer you a comfortable place to sleep.



Watch a video of this model







606F



606F



606F

## With or without drop-down bed

Configure your Series 6F however you like. The electric drop-down double bed is available as an option for all models (standard feature for 606F). This gives you four berths in your vehicle.







696F



696F



696F

# SERIE 8F

## French charm in a motorhome

With Series 8F, the art of living has never been so alluring. In this series, you can enjoy one of our RAPIDO A-Class models.

Get ready to be charmed by a motorhome where the chic interior joins the stylish look enhanced by the curvy front.







SERIE 8F

A-class models with FIAT chassis & extra-wide rear track

## 854F

6,99 m x 2,35 m



2+2\*



7



2+2  
2+2+2\*\*



## 866F

7,49 m x 2,35 m



2+2\*



5



2+2  
2+1\*\*\*



High  
beds



## 886F

7,20 m x 2,35 m



2+2\*



4



2+2  
2+1\*\*\*



\* Seats with seat belts: for registered (driving) seats, please refer to the technical manual available on our website.

\*\* With drop-down bed option.

\*\*\* With option of no cab bed.



# 896F

7,49 m x 2,35 m



2+2\*



5



2+2  
2+1\*\*\*



## EXTERNAL SLIDING STORAGE DRAWER



With key lock. Exclusive option for Series 8F.

## Construction

- 100% shock absorption polyester: roof, side walls and underfloor protection
- Floor bodywork in polyurethane
- Styrofoam® insulation

## Bodywork and openings

- Matte black grille
- Streamlined front with LED day running lights
- Model name and RAPIDO brand in black lettering
- Panoramic wide-angle windscreen
- Large longitudinal living room skylight with wooden trim
- Designer rear pillars with inbuilt tail light unit
- Rear bumper with LED lights
- Inbuilt wiring/space for reversing camera
- Double glazed living area windows with polyurethane frame, and cassette blinds and flyscreen
- Electric living area entry step
- Large living area door: 540 mm (models: 7.49 m)

## Heating

- TRUMA Combi 6 heating with CP PLUS control panel
- Anti-crash system so you can drive with the gas heating on
- Heated waste water tank

## Storage

- Internal underfloor storage compartments (except 854F)
- Heated garage/storage area
- Storage area LED ceiling light rail

## Style

- LUCEO furniture:
  - Wood-colour overhead cupboard doors with black trim
  - New textured grey slate surface on side of kitchen unit
  - Non-woven flooring
- NACARAT furniture:
  - Glossy white overhead cupboard doors
- Horizontal wood grain
- Push lock on overhead cupboard doors
- LED backlit racks in living room
- Light mineral laminate surface on kitchen worktop and living room table
- 100% LED ambient lighting in living room, kitchen and bedroom

## Living room

- Forward-facing conversion of face-to-face living room bench seats
- Face-to-face bench seat armrests (except 854F)
- Easy movement around the living room (no raised floor)
- Overhead cupboards in the living room with extra-wide door
- Open unit to fit 22" flat screen TV
- Laminated table with solid wood moulding (NACARAT) or veneer edges (LUCEO)
- Spotlight under overhead cupboards with inbuilt USB port (LUCEO: matte black; NACARAT: chrome)
- Magnetic bench seat backs for a faster forward-facing conversion

## Kitchen

- White drawer fronts with inbuilt matte black handles (LUCEO: matte white; NACARAT: glossy white)
- Softclosing drawers with electric central locking
- Lighting under the worktop
- Plexiglas finish on kitchen window with inbuilt spice rack and 230 V and 12 V power outlet compartment (LUCEO: glossy black; NACARAT: glossy white)
- Extra spice rack on kitchen side (LUCEO: glossy black; NACARAT: glossy white)
- Worktop extension on kitchen unit side
- Large AES refrigerator
- Embossed stainless steel stove top with 2 hobs, independent black covers and piezo ignition (option 3 hobs)
- Inbuilt cooker hood with LED lighting
- Chromed brass kitchen tap with ceramic cartridge

## Washroom

- Washroom storage unit with two mirror doors and frosted RAPIDO logo
- Matte white washroom unit door with push-lock system
- Laminate basin countertop with aluminium-style finish
- DUO'SPACE: washroom with swivelling partition to optimise space (854F)
- Thermoformed rectangular basin with swivel brass mixer tap and ceramic cartridge (866F, 886F and 896F)
- Shower column with slate grey Plexiglas finish
- Skylight with blackout blind and flyscreen, and clothes drying rack
- Chrome finish washroom accessories
- Quick-clean thermoformed camping toilet compartment

## Bedroom

- Wall-mounted wardrobes with push lock system (886F and 896F)
- Stylish bedside tables with open alcoves and 12 V plug (886F and 896F)
- Spotlight under overhead cupboard with USB port
- Fabric-covered backlit headboard
- Permanent bed with aluminium base frame and active multilayer slats, with highly durable BULTEX® foam mattress
- Retractable central bed base (886F and 896F)
- Second TV space in bedroom with 12V/coaxial/HDMI wiring

## Base vehicle fittings

- Electric power steering
- Coach-style wing mirrors in white
- Central locking on driver's and living area doors
- «Coming Home» mode with automatic awning light and electric entry step

## Cab fittings

- Assisted foldaway cab bed with slat base and BULTEX® foam mattress
- Fabric finish on cab bed bottom and inbuilt spotlights with «Coming Home» mode
- Cab bed bottom with open storage alcove
- Central locking on cab bed
- Cup holders
- Driver's door with electric window
- Embroidered\* cab headrest covers



For the complete equipment list, please refer to the technical manual available on our website or scan this QR code.

\* Embossing on leather upholstery.





### Dual-pleat thermal sliding windscreen blind

SELECT PACK  
Up/down (sunshade).



### Internal storage compartment

Living room hatch for accessing the storage space from the interior (except 854F).

## SELECT PACK



(OPTIONAL EXTRA)

For even more fittings

- Reversing camera with control screen built into the dashboard
- DAB PIONEER® multimedia system with 6.8" screen and APPLE CAR PLAY/ANDROID AUTO
- ESC with Anti Slip Regulation (ASR), Roll Over Mitigation (ROM), Hill Holder, cross wind assist, towing stability control and automatic post-collision braking
- Electric de-frosting wing mirrors
- Height-adjustable swivel cab seats with 2 adjustable armrests
- Thermal sliding, dual-pleat windscreen blind: up/down (sunshade)
- Driver's door with 2-point locking
- Living area door with 2-point locking, fixed window and inbuilt bin
- Living area door flyscreen
- Automatic gas inverter
- 2nd remote keyless entry control (RKE)



## 854F: spacious and enjoyable

Love motorhomes with a big living room and all the mod cons? Then this is your dream model: the 854F! In this new 6.99-metre long version, there's no longer any need to compromise between large living spaces and practical, accessible storage thanks to the expanded garage.







SERIE 8F





866F



866F





896F



896F



896F

# SERIE 80dF

## **Storage double floor and AL-KO chassis: a winning combination**

The RAPIDO pass-through storage double floor is innovative with its external access and wide openings which enable you to store a folding table and chairs. It also boasts all the advantages of a technical double floor, including an insulated fresh water tank, which optimises the interior layout and provides a generous amount of living space. The level floor throughout the vehicle adds to this feeling of spaciousness.







SERIE 80dF

A-class models with FIAT AL-KO chassis, extra-wide rear track and storage double floor

## 8066dF

7,49 m x 2,35 m



2+2\*



5



2+2  
2+1\*\*



High  
beds



ALDE  
as option

ULTIMATE  
*line*



## 8086dF

7,20 m x 2,35 m



2+2\*



4



2+2  
2+1\*\*



## 8096dF

7,49 m x 2,35 m



2+2\*



5



2+2  
2+1\*\*



XXL



ALDE  
as option

ULTIMATE  
*line*



\* Seats with seat belts: for registered (driving) seats, please refer to the technical manual available on our website.

\*\* With option of no cab bed.





## STORAGE DOUBLE FLOOR

- Maximised full-width storage space, accessible from both inside and outside the vehicle
- Heated, lit double floor
- Fresh water and waste water tanks heated
- Flat living area floor, without steps
- Greater acoustic insulation
- Thermal insulation, helping maintain a pleasant ambient temperature in the living area
- Storage space freed up in the living area (all the technical components are contained in the double floor)
- Lowered centre of gravity for optimal stability
- TITAN high resistance interior cladding for greater longevity



Find out more about our storage



## Construction

- 100% shock absorption polyester: roof, side walls and underfloor protection
- Floor bodywork in polyurethane
- Storage area in robust polyurethane
- AL-KO chassis with independent suspension
- Styrofoam® insulation

## Bodywork and openings

- Matte black grille
- Model name and RAPIDO brand in black lettering
- Streamlined front with LED day running lights
- Panoramic wide-angle windscreen
- Large longitudinal living room skylight with wooden trim
- Designer rear pillars with inbuilt tail light unit
- Rear bumper with LED lights
- Inbuilt wiring/space for reversing camera
- Double glazed living area windows with polyurethane frame, and cassette blinds and flyscreen
- Electric living area entry step
- Living area entry step backlighting turns on when door opens
- Large living area door: 540 mm (models: 7.49 m)
- Storage area hatch struts
- Storage area compression handles flush with hatch, with 2-point locking

## Heating

- ALDE Arctic Comfort Plus heating (option on 8066dF and 8096dF)
- TRUMA Combi 6 heating with CP PLUS control panel (8086dF; 6 EH in 8066dF and 8096dF)
- Heating distributed via the living room table leg (8066dF, 8086dF, 8096dF; except telescopic leg)
- TRUMA windscreen heating duct to remove condensation (not compatible with WEBASTO)
- Anti-crash system so you can drive with the gas heating on

## Storage

- Full-width storage double floor with internal and external access
- Heated, lit double floor
- Heated garage/storage area

## Style

- LUCEO furniture:
  - Wood-colour overhead cupboard doors with black trim
  - New textured grey slate surface on side of kitchen unit
  - Non-woven flooring
- NACARAT furniture:
  - Glossy white overhead cupboard doors
- Horizontal wood grain
- Push lock on overhead cupboard doors
- LED backlit racks in living room
- Light mineral laminate surface on kitchen worktop and living room table
- 100% LED ambient lighting in living room, kitchen and bedroom
- New TEP\* upholstery as standard with quilted pattern and decorative piping (PALMA with NACARAT and NOUMEA with LUCEO)

## Living room

- Forward-facing conversion of face-to-face living room bench seats
- Living room bench seat armrest
- Easy movement around the living room (no raised floor)
- Overhead cupboards in the living room with extra-wide door
- Inbuilt unit to fit 32" flat screen TV with backlighting and storage (except 8086dF)
- Laminate table with solid wood moulding, varnished (NACARAT) or matte black (LUCEO)
- Spotlight under overhead cupboards with inbuilt USB port (LUCEO: matte black; NACARAT: chrome)
- Magnetic bench seat backs for a faster forward-facing conversion

## Kitchen

- White drawer fronts with inbuilt matte black handles (LUCEO: matte white; NACARAT: glossy white)
- Soft-closing drawers with electric central locking
- Lighting under the worktop
- Plexiglas finish on kitchen window with inbuilt spice rack and 230 V and 12 V power outlet compartment (LUCEO: glossy black; NACARAT: glossy white)
- Extra spice rack on kitchen side (LUCEO: glossy black; NACARAT: glossy white)
- Worktop extension on kitchen unit side
- Deep 156-litre fridge with flat door (135-litre for 8086dF)
- Embossed stainless steel stove top with 2 hobs, independent black covers and piezo ignition (option 3 hobs)
- Inbuilt cooker hood with LED lighting
- Chromed brass kitchen tap with ceramic cartridge

## Washroom

- Washroom storage unit with two mirror doors and frosted RAPIDO logo
- Matte white washroom unit door with push-lock system
- Laminate basin countertop with aluminium-style finish
- Thermoformed rectangular basin with swivel brass mixer tap and ceramic cartridge
- Shower column with slate grey Plexiglas finish (8086dF)
- Skylight with blackout blind and flyscreen, and clothes drying rack
- Chrome finish washroom accessories
- Quick-clean thermoformed camping toilet compartment

## Bedroom

- Wall-mounted wardrobes with curved door and push lock system (8086dF and 8096dF)
- Stylish bedside tables with open alcoves and 12 V plug (8086dF and 8096dF)
- Spotlight under overhead cupboard with USB port
- Backlighting on overhead cupboards and wall-mounted wardrobes (8086dF and 8096dF)
- Fabric-covered backlit headboard
- Permanent bed with aluminium base frame and active multilayer slats, with highly durable BULTEX® foam mattress
- Retractable central bed base
- Storage drawer at the foot of central bed
- Second TV space in bedroom with 12V/coaxial/HDMI wiring

## Base vehicle fittings

- Electric power steering
- Coach-style wing mirrors in white
- Central locking on driver's and living area doors
- «Coming Home» mode with automatic awning light and electric entry step

## Cab fittings

- Assisted foldaway cab bed with slat base and BULTEX® foam mattress
- Fabric finish on cab bed bottom and inbuilt spotlights with «Coming Home» mode
- Cab bed bottom with enclosed storage
- Central locking on cab bed
- Cup holders
- Driver's door with electric window
- Embroidered\*\* cab headrest covers



For the complete equipment list, please refer to the technical manual available on our website or scan this QR code.

\* TEP: Polyamide-coated fabric.

\*\* Embossing on leather upholstery.





## ULTIMATE *line*

The 8066dF and 8096dF models feature a superior level of fittings reserved for the ULTIMATE LINE special edition series.

*Refer to page 6 of this catalogue to find out more.*

## SELECT PACK



(OPTIONAL EXTRA)

**For even more fittings**

- Reversing camera with control screen built into the dashboard
- DAB PIONEER® multimedia system with 6.8" screen and APPLE CAR PLAY/ANDROID AUTO
- ESC with Anti Slip Regulation (ASR), Roll Over Mitigation (ROM), Hill Holder, cross wind assist, towing stability control and automatic post-collision braking
- Electric de-frosting wing mirrors
- Height-adjustable swivel cab seats with 2 adjustable armrests
- Dual-pleat thermal sliding windscreen blind: up/down (sunshade) and down/up (privacy screen)
- Driver's door with 2-point locking
- Living area door with 2-point locking, fixed window and inbuilt bin
- Living area door flyscreen
- Automatic gas inverter
- 2nd remote keyless entry control (RKE)



## Enjoy an exclusive experience with our 2 ULTIMATE LINE models

Looking for an exclusive model?

Choose from our two ULTIMATE LINE special edition models: 8066dF and 8096dF. These models give you access to an exclusive range of fittings.



8066dF





8066dF

## Charismatic front

Series 80dF models feature a streamlined, stylish grille. This matte black grille with centred chrome RAPIDO logo astutely sits between two LED day running lights.

## Your favourite TV show

Make yourself comfortable in your RAPIDO's living room to watch your favourite TV show while enjoying the design of your TV unit.

In Series 80dF (except 8086dF), the TV unit is truly a piece of design. It is perfectly integrated in the living room, offering space for a 32" flat screen TV, backlighting and storage.

**The 8096dF has been tested and approved by our customers!**

Read the review by Bernard & Rose-Marie



Find out more



8066dF



8096dF



FP9608





8096dF



8096dF



8096dF





# SERIE DISTINCTION

## Style in the spotlight

DISTINCTION Series is worthy of its name. Its innovative technology makes it stand out from all other motorhomes.

This can be seen in its bodywork, which features a rounded exterior design. This series boasts flowing, aerodynamic shapes.

The rear panel created by our designers complements the streamlined grille with its high-end, dynamic style and quality.

DISTINCTION Series features an AL-KO chassis and stands out from the rest with its pass-through storage double floor. Inside, enjoy the luxury atmosphere of premium models with furniture made from high quality wood in modern styles.



A-class models with FIAT AL-KO chassis, extra-wide rear track and storage double floor

## i66

7,54 m x 2,35 m



2+2\*



5



2+2  
2+1\*\*



High  
beds



ALDE  
as standard

ULTIMATE  
*line*



## i96

7,54 m x 2,35 m



2+2\*



5



2+2  
2+1\*\*



XXL



ALDE  
as option

ULTIMATE  
*line*



\* Seats with seat belts: for registered (driving) seats, please refer to the technical manual available on our website.

\*\* With option of no cab bed.





## STORAGE DOUBLE FLOOR



- Maximised full-width storage space, accessible from both inside and outside the vehicle
- Heated, lit double floor
- Fresh water and waste water tanks heated
- Flat living area floor, without steps
- Greater acoustic insulation
- Thermal insulation, helping maintain a pleasant ambient temperature in the living area
- Storage space freed up in the living area (all the technical components are contained in the double floor)
- Lowered centre of gravity for optimal stability
- TITAN high resistance interior cladding for greater longevity



## Construction

- 100% shock absorption polyester: roof, side walls and underfloor protection
- Full-cover roof
- Bodywork (roof, panels and floor): 100% polyurethane
- Storage area in robust polyurethane
- AL-KO chassis with independent suspension
- 30 mm Styrofoam® insulation

## Bodywork and openings

- Rounded exterior design
- RAPIDO brand in black lettering
- Streamlined grille
- Rear panel:
  - Rear spoiler with inbuilt third brake light
  - Designer rear pillars
  - Polyurethane taillight units
  - Two-tone lenses, inbuilt logo and carbon-inspired branding
  - Rear bumper with through-dyed spoiler
  - Inbuilt wiring/space for reversing camera
  - Chrome RAPIDO logo
- Large longitudinal living room skylight with wooden trim
- Double glazed living area windows with polyurethane frame, non-woven blinds and flyscreen
- Living area door with 2-point locking, fixed window and inbuilt bin
- Large living area door: 540 mm (i66 and i96)
- Electric living area entry step
- Living area entry step backlighting turns on when door opens
- Storage area hatch struts
- Storage area compression handles flush with hatch, with 2-point locking

## Heating

- ALDE Arctic Comfort Plus central heating (option for i96; standard for i66)
- ALDE heating under left cab seat (only available with ALDE heating)
- TRUMA Combi 6 EH (gas and electricity) heating with CP PLUS control panel (i96)
- Heating distributed via the living room table leg (except telescopic leg)
- TRUMA windscreen heating duct (not compatible with WEBASTO)
- Automatic gas inverter with anti-crash system

## Storage

- Full-width storage double floor with internal and external access
- Heated, lit double floor
- Heated garage/storage area

## Style

- NACARAT furniture:
  - Kitchen/living room suspended rack with solid wood varnished mouldings
  - Light mineral laminate surface on kitchen worktop and living room table
  - Net curtains with TEP\* tiebacks on illuminated curtain rods
- Glossy white overhead cupboard doors
- Push lock on overhead cupboard doors
- 100% LED ambient lighting in living room, kitchen and bedroom
- Soft touch ceiling fabric
- New TEP\* upholstery as standard with quilted pattern and decorative piping (PALMA)

## Living room

- Forward-facing conversion of face-to-face living room bench seats
- Height-adjustable headrests (forward-facing bench seat)
- Living room bench seat armrest
- Inbuilt unit to fit 32" flat screen TV with backlighting and storage
- Laminated table with solid wood moulding
- Chrome spotlight under overhead cupboards with inbuilt USB port
- Magnetic bench seat backs for a faster forward-facing conversion

## Kitchen

- Curvy kitchen design
- Glossy white drawer fronts with inbuilt matte black handles
- Soft-closing drawers with electric central locking
- Lighting under the worktop
- Glossy white Plexiglas finish on kitchen window with inbuilt spice rack and 230 V and 12 V power outlet compartment
- Additional glossy white spice rack on kitchen side
- Worktop extension on kitchen unit side
- Deep 171-litre fridge with flat double hinge door (left or right opening)
- Embossed stainless steel stove top with 2 hobs, independent black covers and piezo ignition (option 3 hobs)
- Inbuilt cooker hood with LED lighting
- Chromed brass kitchen tap with ceramic cartridge

## Washroom

- Washroom storage unit with two mirror doors and frosted RAPIDO logo
- Matte white washroom unit door with push-lock system
- Laminate basin countertop with aluminium-style finish
- Thermoformed rectangular basin with swivel brass mixer tap and ceramic cartridge
- Skylight with blackout blind and flyscreen, and clothes drying rack
- Chrome finish washroom accessories
- Quick-clean thermoformed camping toilet compartment

## Bedroom

- Wall-mounted wardrobes with curved door and push lock system (i96)
- Stylish bedside tables with open alcoves and 12 V plug (i96)
- Spotlight under overhead cupboard with USB port
- Backlighting on overhead cupboards and wall-mounted wardrobes (i96)
- Fabric-covered backlit headboard
- Permanent bed with aluminium base frame and active multilayer slats, with highly durable BULTEX® foam mattress
- Retractable central bed base
- Electric height-adjustable (30 cm) central bed with large storage area/garage
- Storage drawer at the foot of central bed
- Second TV space in bedroom with 12V/coaxial/HDMI wiring

## Base vehicle fittings

- Electric power steering
- Coach-style wing mirrors: electric, defrosting, dual-view (fixed wide angle lens)/two-tone mirrors
- LED day running lights
- Central locking on driver's and living area doors
- «Coming Home» mode with automatic awning light and electric entry step



For the complete equipment list, please refer to the technical manual available on our website or scan this QR code.

\* TEP: Polyamide-coated fabric.

\*\* Embossing on leather upholstery.



### Cab fittings

- 100% digital dashboard
- AGUTI swivel cab seats in fabric matching the living area
- Jack-assisted foldaway cab bed with slat base and BULTEX® foam mattress
- Central locking on cab bed (not compatible with electric jack)
- Fabric finish on cab bed bottom and inbuilt spotlights with «Coming Home» mode
- Cab bed bottom with enclosed storage
- Cab bed style incorporated with the furniture range
- Dashboard finish with white stitching on leather-style yokes
- Driver's door with sequential electric window
- Embroidered\*\* cab headrest covers

### Living area fittings

- Living area door flyscreen
- External shower with hot and cold water
- Waste water drainage with electric valve control in the storage area



**ULTIMATE**  
*line*

The DISTINCTION models feature a superior level of fittings reserved for the ULTIMATE LINE special edition series.

*Refer to page 6 of this catalogue to find out more.*

## EXECUTIVE PACK



(OPTIONAL EXTRA)  
**For even more fittings**

- Reversing camera with control screen built into the dashboard
- DAB PIONEER® multimedia system with 6.8" screen and APPLE CAR PLAY/ANDROID AUTO
- Driver's door with 2-point locking
- Memory foam mattress topper on permanent bed
- Leather steering wheel and gear knob
- PIONEER® radio controls on steering wheel
- Radio remote controls (on/off, volume and stations) in living area
- Electric dual-pleat thermal sliding windscreen blind: up/down (sunshade) and down/up (privacy screen)
- ESC with Anti Slip Regulation (ASR), Roll Over Mitigation (ROM), Hill Holder, cross wind assist, towing stability control and automatic post-collision braking
- Fog lights
- Stabilising jacks
- 2nd remote keyless entry control (RKE)

### Dual-pleat thermal sliding windscreen blind



Up/down (sunshade).



Down/up (privacy screen).

## 100% ULTIMATE LINE

The two DISTINCTION Series models boast enhanced fittings with the ULTIMATE LINE finish. This makes RAPIDO's high end models even more appealing.







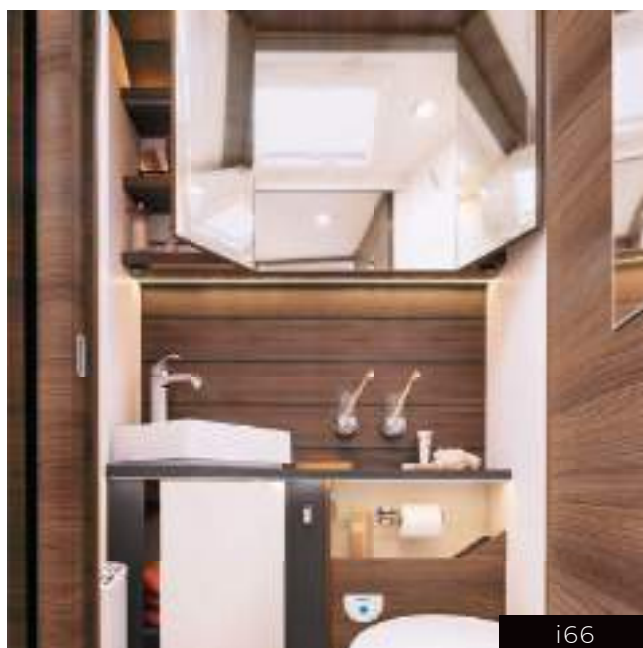
i96



i66



i96



i66

## A kitchen worthy of the best

The on-trend kitchen in our DISTINCTION Series models features a curvy design with flowing lines.

## Exclusive exterior look

DISTINCTION Series models now feature an exclusive rear panel. The clever combination of materials, shapes and colours are sure to make an impression.



i66







# SERIE

# M

## A perfect blend of innovation and charm

Inspired by our most stunning models, the M Series signals the return of the MERCEDES SPRINTER for RAPIDO. Featuring two layout options (XXL central bed or twin beds), it will win your heart with its premium fittings and instantly recognisable style.



A-class models with MERCEDES AL-KO chassis, extra-wide rear track and storage double floor

## M66

7,54 m x 2,35 m



2+2\*



5



2+2  
2+1\*\*



High  
beds



ALDE  
as standard



## M96

7,54 m x 2,35 m



2+2\*



5



2+2  
2+1\*\*



XXL



ALDE  
as option



## STORAGE DOUBLE FLOOR

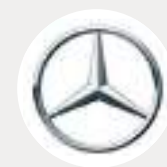


\* Seats with seat belts: for registered (driving) seats, please refer to the technical manual available on our website.

\*\* With option of no cab bed.



# STEP INTO THE M SERIES WORLD



By choosing a M Series model, you are guaranteed the best in technology and an exceptional chassis, delivering an unrivalled driving experience.



## MERCEDES MBUX 10.25"\* DAB multimedia system

The MBUX multimedia system with its 10.25" touch screen has everything you need in terms of information, entertainment, navigation and communication in your vehicle.

The screen also displays the reversing camera image.



## Height and angle adjustable multi-function steering wheel\*

The multi-function steering wheel lets you comfortably control the onboard computer, vehicle functions and multimedia systems without taking your hands off the wheel.



## Automatic gearbox 9G TRONIC (option)

The nine gears let you drive at low RPM, reducing fuel consumption and resulting in a more pleasant noise level. The beautifully designed gear changes are almost imperceptible.



## KEYLESS START\* operation

The KEYLESS START authorisation system lets you start your engine without using a key, simply by pressing the start button and the clutch or brake pedal. This also manages the Stop & Start function.



## Driving assistance

Your M Series RAPIDO features the best in technology to ensure you enjoy the best driving experience possible:

- Electric parking brake\*
- ABS (anti-lock brake system), ASR (traction control), EBV (electronic braking variator) and ESP (electronic stability programme)
- Hill start assistance
- TEMPOMAT cruise control with speed limiter
- Automatic headlights\*
- Stability system in the event of cross winds\*
- Automatic tyre pressure monitoring (option)

\* M Pack

## Construction

- 100% shock absorption polyester: roof, side walls and underfloor protection
- Floor bodywork in polyurethane
- Storage area in robust polyurethane
- AL-KO chassis with independent suspension
- Styrofoam® insulation

## Bodywork and openings

- Model name and RAPIDO brand in black lettering
- Streamlined front with LED day running lights
- Exclusive exterior décor
- Exclusive rear panel
- Designer rear pillars with inbuilt tail light unit
- Large longitudinal living room skylight with wooden trim
- Double glazed living area windows with polyurethane frame, non-woven blinds and flyscreen
- Electric living area entry step
- Living area entry step backlighting turns on when door opens
- Living area door with 2-point locking, fixed window and inbuilt bin
- Large living area door: 540 mm
- Storage area hatch struts
- Storage area compression handles flush with hatch, with 2-point locking

## Heating

- ALDE Arctic Comfort Plus heating (option on M96; standard on M66)
- TRUMA Combi 6 heating with CP PLUS control panel (M96)
- Heating distributed via the living room table leg (except telescopic leg) (if ALDE)
- Additional MERCEDES heating (if ALDE)
- TRUMA windscreen heating duct to remove condensation (not compatible with WEBASTO)
- Automatic gas inverter with anti-crash system

## Storage

- Full-width storage double floor with internal and external access
- Heated, lit double floor
- Heated garage/storage area

## Style

- NACARAT furniture:
  - Contrasting, warm colours
  - Light mineral laminate surface on kitchen worktop and living room table
  - Net curtains with TEP\* tiebacks on curtain rods
- Glossy white overhead cupboard doors
- Push lock on overhead cupboard doors
- Cab bed bottom with stitched TEP\* design and LED lights
- 100% LED ambient lighting in living room, kitchen and bedroom
- Bedroom indirect lighting dimmer

## Living room

- Forward-facing conversion of face-to-face living room bench seats
- Living room bench seat armrest
- Easy movement around the living room (no raised floor)
- Inbuilt unit to fit 32" flat screen TV with backlighting and storage
- Laminated table with solid wood moulding
- Chrome spotlight under overhead cupboards with inbuilt USB port
- Magnetic bench seat backs for a faster forward-facing conversion

## Kitchen

- Curvy kitchen design
- Glossy white drawer fronts with inbuilt matte black handles
- Soft-closing drawers with electric central locking
- Lighting under the worktop
- Glossy white Plexiglas finish on kitchen window with inbuilt spice rack and 230 V and 12 V power outlet compartment
- Additional glossy white spice rack on kitchen side
- Worktop extension on kitchen unit side
- Deep 171-litre fridge with flat double hinge door (left or right opening)
- Embossed stainless steel stove top with 2 hobs, independent black covers and piezo ignition (option 3 hobs)
- Chromed brass kitchen tap with ceramic cartridge

## Washroom

- Washroom storage unit with two mirror doors and frosted RAPIDO logo
- Matte white washroom unit door with push-lock system
- Laminate basin countertop with aluminium-style finish
- Thermoformed rectangular basin with swivel brass mixer tap and ceramic cartridge
- Shower column with slate grey Plexiglas finish and customisable backlighting
- Skylight with blackout blind and flyscreen, and clothes drying rack
- Chrome finish washroom accessories
- Quick-clean thermoformed camping toilet compartment

## Bedroom

- Wall-mounted wardrobes with curved door and push lock system (M96)
- Stylish bedside tables with open alcoves and 12 V plug (M96)
- Spotlight under overhead cupboard with USB port
- Backlighting on overhead cupboards and wall-mounted wardrobes (M96)
- Fabric-covered backlit headboard
- Permanent bed with aluminium base frame and active multilayer slats, with highly durable BULTEX® foam mattress
- Retractable central bed base
- Electric height-adjustable (30 cm) central bed with large storage area/garage
- XXL permanent bed: 160 x 198 cm (M96)
- Storage drawer at the foot of central bed
- Second TV space in bedroom with 12V/coaxial/HDMI wiring

## Base vehicle fittings

- ESP: electronic stability programme
- MERCEDES engine compartment insulation and cladding under engine
- Stop & Start
- Hill start assistance
- TEMPOMAT cruise control with speed limiter
- Coach-style wing mirrors: electric, defrosting, dual-view (fixed wide angle lens)/two-tone mirrors
- Central locking on driver's and living area doors
- «Coming Home» mode with automatic awning light and electric entry step



For the complete equipment list, please refer to the technical manual available on our website or scan this QR code.

\* TEP: Polyamide-coated fabric.

\*\* Embossing on leather upholstery.



### Cab fittings

- AGUTI swivel cab seats in fabric matching the living area
- Assisted foldaway cab bed with slat base and BULTEX® foam mattress
- Central locking on cab bed
- Driver's door with electric window
- Chrome-ringed instruments
- Embroidered™ cab headrest covers

### Living area fittings

- Living area door flyscreen



## M PACK



### (OPTIONAL EXTRA)

#### For even more fittings

- MERCEDES MBUX 10.25" multimedia system with GPS navigation and DAB technology
- Height and angle adjustable multi-function steering wheel
- Reversing camera with control screen built into the dashboard
- Semi-automatic TEMPMATIC cab air conditioning
- Leather steering wheel and gear knob (only leather steering wheel for automatic gearboxes)
- Fold-down lids on central and side coin trays
- Electric parking brake
- Fog lights
- Automatic headlights
- Stability system in the event of cross winds
- Keyless start
- Fuel filter and water separator
- Driver's door with 2-point locking
- Stylish extractor hood with touch control façade
- Dual-pleat thermal sliding windscreen blind: up/down (sunshade) and down/up (privacy screen)

#### Dual-pleat thermal sliding windscreen blind



Up/down (sunshade).



Down/up (privacy screen).

## Travel under a lucky star

M Series boasts a distinctive streamlined front, refined interior style and car-inspired dashboard. When you choose M Series, you are guaranteed to travel under a lucky star.



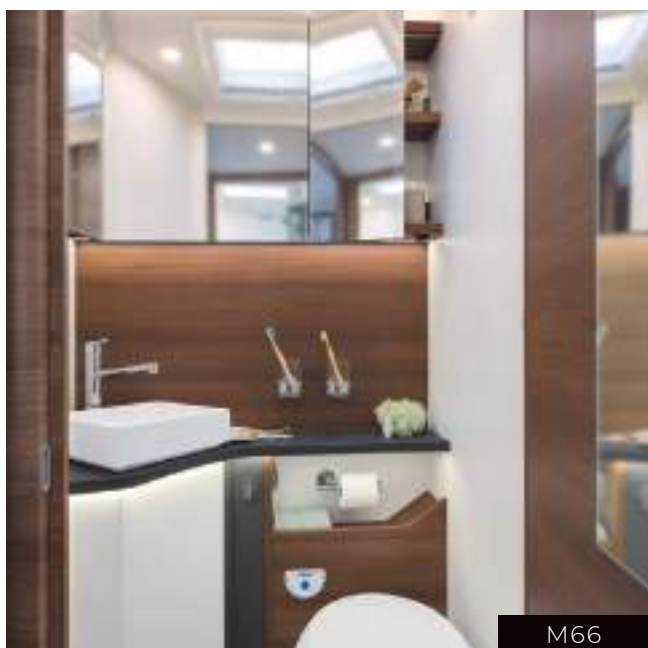




M66



M96



M66



M96

## A perfect blend

There is no longer any need to compromise between choosing a luxury RAPIDO model and a sporty, car-style base vehicle. Experience new driving sensations at the steering wheel as well as more enjoyment than ever before while on the road and parked.

## Outstanding design

From outside, the M Series models will charm you with their automotive look. Their front completely embodies the perfect blend of MERCEDES luxury and RAPIDO expertise. Their rear is also unique and features designer pillars.



M96

# CHOOSE YOUR STYLE, CUSTOMISE YOUR RAPIDO!

Customise your RAPIDO by choosing from our range of furniture and upholstery styles. Combine them to create a RAPIDO that suits you!

## FURNITURE

### LUCEO

### NACARAT

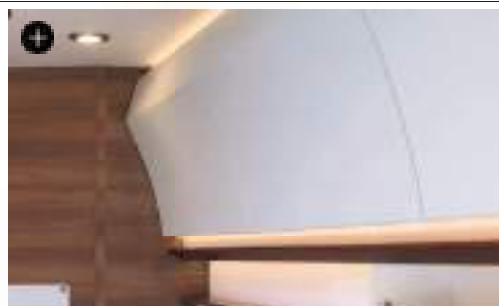
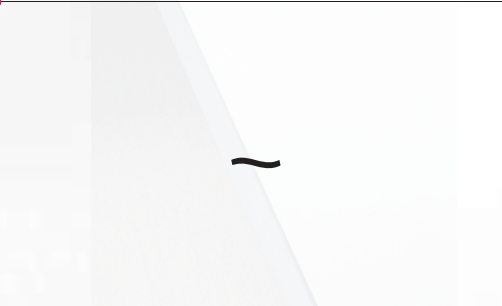
VANS



C\*, 6F,  
8F, 80dF



DISTINCTION,  
M

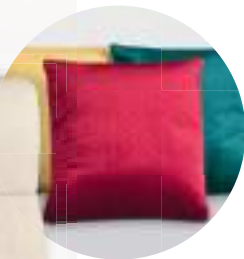
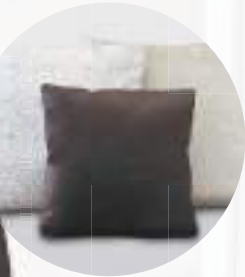


*\* No rack in C Series.*



# UPHOLSTERY

## TEP\* UPHOLSTERY



## LEATHER UPHOLSTERY



### Cushions to match your fabric style

A set of three cushions with individual patterns are great additions to your upholstery. They beautifully match your upholstery and enhance your interior.

	VANS	SERIE C	SERIE 6F	SERIE 8F**	SERIE 80dF	SERIE DISTINCTION	SERIE M
ALICANTE	●	●	●	●	●	●	-
MONTREAL	○	○	○	○	○	●	●
MILAN	○	○	○	○	○	●	●
TORONTO	-	○	○	○	○	●	●
NOUMEA***	-	-	●	-	● 8066dF 8096dF	-	-
PALMA***	-	-	●	-	● 8066dF 8096dF	●	-
AUSTIN	-	○	○	○	○	○	○

- Available as standard
- Available at additional cost
- Not available

\* TEP: Polyamide-coated fabric. ALICANTE: Fabric/TEP upholstery.  
\*\* 854F: ALICANTE and MILAN only.  
\*\*\* The upholstery is determined by the furniture style selected: NOUMEA with LUCEO and PALMA with NACARAT.

# ALL YOU NEED FOR THE PERFECT TRIP

The standard fittings provided in RAPIDO vehicles are remarkably extensive. The level offered is without doubt the best available on the market in each class. However, you can also select from a wide range of options in our catalogue to customise your vehicle to your taste.

## CONNECT PACK (FIAT)

- PIONEER® DAB multimedia GPS system with large 9" touchscreen and APPLE CAR PLAY/ANDROID AUTO
- 100% digital dashboard (standard feature for DISTINCTION)
- Keyless start and lock/unlock (VANS, C (except C55i, C86i), 6F)
- Automatic cab air-conditioning
- Induction smartphone charger



● VANS, C, 6F, 8F, 80dF, DISTINCTION

## ALL BLACK PACK (FIAT)

- 100% LED front lights with sequential indicators
- 16" light alloy FIAT rims (+4.5 cm vehicle height)
- Fog lights with directional lighting
- Black skid plate



● VANS, C (except C55i and C86i) and 6F

## CONTROL PACK

- Electric folding wing mirrors
- TPMS: tyre pressure monitoring system (FIAT)
- Blind spot detector and rear cross traffic alert



● VANS

## SYMPHONY AUDIO PACK

This pack consists of:

- 1 subwoofer
  - 2 speakers in the living room
  - 2 speakers in the bedroom
- The sound is harmoniously distributed throughout the living spaces, providing excellent sound quality.



● C, 6F, 8F, 80dF, DISTINCTION, M

## Without cab bed

With telescopic living room table leg for bed position.



● C55i, C86i, 8F (except 854F), 80dF, DISTINCTION and M

## Rims\*

The following alloy rims are available to customise the style of your vehicle's exterior:

- 1 16" light alloy FIAT or PEUGEOT rims for LIGHT models (manual gearbox in 3.5 T or 3.65 T): +4.5 cm vehicle height
- 2 16" light alloy FIAT or PEUGEOT rims for LIGHT models (automatic gearbox in 3.5 T or 3.65 T): +4.5 cm vehicle height
- 2 16" light alloy FIAT or PEUGEOT rims for HEAVY models (4 T and over)
- 3 16" light alloy MERCEDES rims for LIGHT models (3.5 T)
- 4 17" light alloy MERCEDES rims for HEAVY models (4.2 T or 4.5 T)



1  
● 8066dF, 8096dF, i66, i96  
● Vans, C, 6F, 8F, 8086dF



2  
● If HEAVY: 8066dF, 8096dF, i66, i96  
● VANS, C, 6F, 8F and 8086dF



3  
● M



4  
● M

\* Models may change during the Collection.

● Standard

● Option



# A NETWORK OF 163 DEALERSHIPS

## SAFETY PACK

The SAFETY PACK protects you on the road and includes:



Emergency braking system with pedestrian, cyclist and vehicle camera detection (FIAT)



Lane Departure Warning System (LDWS)



Smart headlights



Road sign recognition system



Rain and light sensor

● VANS, C (except CSE and CSEi) and 6F

## PREMIUM PACK (PEUGEOT)

- Front fog lights
- Automatic headlights
- Front windscreen wipers with rain sensor
- Leather steering wheel and gear knob
- Radio controls on steering wheel
- Grey aluminium finish on air vent

● VANS

## ENERGIE PACK

- 160 W factory-assembled solar panel
- 100 Ah lithium battery

● C, 6F, 8F, 80dF, DISTINCTION, M

## ENERGIE+ PACK

- ENERGIE Pack
- Second 100 Ah lithium battery

● C, 6F, 8F, 80dF, DISTINCTION, M



**RAPIDO's distributors have been rigorously selected for their quality of service.**

**UPDATED LIST OF DEALERS  
AVAILABLE AT**

**[WWW.RAPIDO.FR](http://WWW.RAPIDO.FR)**

**NEW!**

IT'S SIMPLE TO FINANCE  
YOUR VEHICLE  
WITH



**RAPIDO**  
**-GROUP**  
FINANCE



**RAPIDO Group Finance\*** offers a comprehensive range of tailored options to finance your next **RAPIDO** purchase.

Talk to your local approved **RAPIDO** dealer to get the best deals and enjoy your recreational vehicle with peace of mind.

**A LOAN CONTRACT IS BINDING AND THE LOAN MUST BE REPAYED.  
ENSURE THAT YOU CAN AFFORD THE REPAYMENTS BEFORE COMMITTING TO THE CONTRACT.**

\* Available in the following countries: Germany, Austria, Belgium, Denmark, Spain, France, Italy, United Kingdom, Netherlands, Poland, Portugal and Switzerland.



Find out more about financing your vehicle



[www.rapido.fr](http://www.rapido.fr)

RIGHT HAND DRIVE  
*Special pack*

WITH RAPIDO MAKE SURE  
YOU WON'T MISS A THING

Especially for our customers in UK, Ireland and New Zealand we have created the most comprehensive equipment level ever, and combined it all into a "Right Hand Drive special" pack\*. It contains options improving your driving safety, as well as a great number of elements enhancing design and everyday comfort - we want to make sure that you really feel at home in your RAPIDO!

RAPIDO motorhomes of the 2024 collection based on RHD chassis come with particularly complete equipment, including (depending on the model)\*:

## SAFETY

- ☒ Traction+ with Hill Descent Control (FIAT)
- ☒ Fog lights\*\*
- ☒ Radio control on steering wheel
- ☒ Outside rear mirrors with double view (wide angle) [A-CLASS]

## COMFORT

- ☒ Leather steering wheel and gear knob
- ☒ Carpet kit (cab and living area)
- ☒ Oven
- ☒ Truma Combi 6EH with CP PLUS\*\* (except ALDE)
- ☒ 3 burner kitchen hob\*\* (except C-Series)
- ☒ 2nd AGM living area battery\*\*
- ☒ Heated waste water tank\*\*
- ☒ Outside shower warm/cold water\*\*
- ☒ Rear steadies\*\*

\*See details per model in the technical guide. All mentioned options are included in the vehicle price for Right Hand Drive models. The weight of these options is detailed in the technical specifications, and not included in the GVW – it therefore must be deducted from the payload.

<sup>44</sup> Except USMS.

SCAN THIS QR CODE  
AND DISCOVER OUR  
DIGITAL CATALOGUE



414 RUE DES PERROUINS - CS 20019 - 53101 MAYENNE CEDEX - FRANCE - TEL. : +33 (0) 2 43 30 10 70

In addition to the contractual 3-year warranty for your vehicle and the manufacturers' warranties on original accessories installed during assembly, you enjoy a 6.5-year warranty on furniture frames and water-tightness when you have your vehicle moisture checked annually during the 6 years after it is first registered. The warranties covering all accessories installed at the dealership are provided by the original manufacturers under their terms and conditions, through the dealer. The chassis warranty is provided by the chassis manufacturer.

Cost of transport is borne by the customer. Motorhomes, campervans and vans are designed for leisure use. Under no circumstances are they intended to be used as a permanent home.

Some models presented in this catalogue may be shown with optional equipment. Non-contractual photo-stylistic elements, décor and accessories not included. Since part of R&POO production is intended for export, the characteristics of the models may vary from one country to another. For an exact definition of the models marketed, we request you to consult your dealer.

Your dealer will be happy to give you any further information you may require.